

## RECEIPTS AND TAG PRINTERS SETUP FOR ENLITEXP

1. RECEIPTS AND TICKET PRINTER SETUP.....	2
1.1 Epson TM T-88 (I, II, III, & IV).....	2
1.2 CONFIGURING Epson TM T-88 ON ENLITEXP.....	2
1.3 STAR TSP 600+ (SERIAL ONLY).....	4
1.4 STAR TSP 100+ (USB ONLY).....	4
1.5 CONFIGURING TSP100 ON ENLITEXP.....	10
2. TAG PRINTERS SETUP FOR ENLITEXP.....	12
2.1 CONFIGURING OKI Microline 320 ON ENLITEXP.....	12
2.2 CONFIGURING STAR SP500 ON ENLITEXP.....	13

# **1. RECEIPTS AND TICKET PRINTER SETUP FOR ENLITEXP**

---

Three types of printers that are frequently used:

- Epson TM T-88 (I, II, III, & IV)
- Star TSP 600 +
- Star TSP 100+ (USB only)

All Printers/hardware MUST first be installed on windows and tested before adding to EnliteXP.

INSTALLATION:

## **1.1 Epson TM T-88 (I, II, III, & IV)**

**Instructions applies for SERIAL PORTS ONLY  
(No Changes are needed for Parallel Ports Connectors Printers)**

Change Baud rate to 19200 (See Printer Manual)

Printer Test:

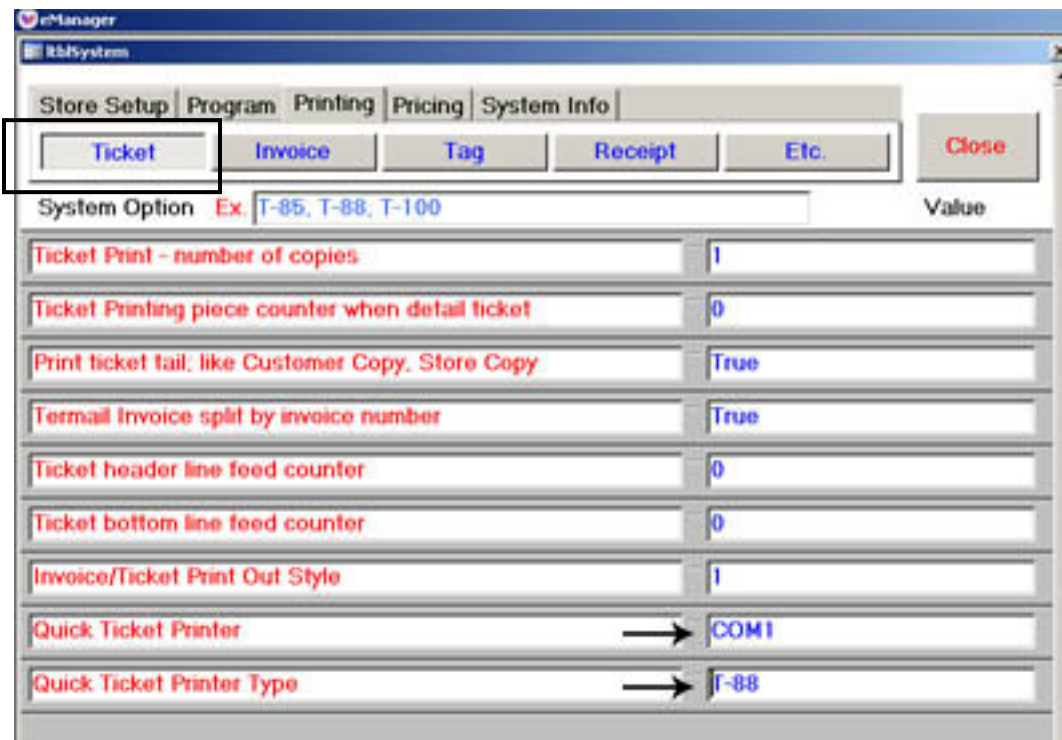
1. Turn off Printer
2. Hold Feed Button and Turn on Printer Simultaneously (make sure print out have a Baud Rate of 19200.
3. Press Feed Button again to stop red light from blinking.
4. Connect the printer to COM1 port

## **1.2 CONFIGURING Epson TM T-88 ON ENLITEXP**

1. Open EnliteXP
2. Go to the MENU and click in the Manager Access Button, type the password.
3. Click in the "Option Change" button



- Go to "Printing" tab and write COM1 in Quick Ticket Printer and T-88 in Quick Ticket Printer Type



### 1.3 STAR TSP 600+ (SERIAL ONLY)

Instructions applies for **SERIAL PORTS ONLY**  
(No Changes are needed for Parallel Ports Connectors Printers)

- 1- Change Printer Emulation Mode from Star to Epson (ESC/POS) mode
  - I - Open Dip Switch 1 cover (Found in bottom of printer)
  - II - Turn switch 1 to OFF and switches 2-8 to ON
- 2- Change Baud Rate to 19200 (See printer manual or follow instructions below)
  - I - Remove the serial interface board unit (Found in back of printer).
  - II - Turn Switch 2 to OFF and switches 1, 3,4,5,6,-- stays to ON.
- 3- Now, do printer test:
  - I - Turn off Printer
  - II- Hold Feed Button and Turn on Printer Simultaneously (make sure print out have a Baud Rate of 19200.
  - III- Press Feed Button again to stop red light from blinking

**THE STAR TSP 600 SETTINGS ON ENLITEXP ARE THE SAME FOR THE EPSON TM- T88 (See pg. 2)**

### 1.4 STAR TSP 100 + (USB ONLY)

- 1- Insert Installation CD into computer.



- 2-

Welcome to the World of FuturePRNT!



Visit [www.futurePRNT.com](http://www.futurePRNT.com)

### Installation Agreement License Agreement

*Please read the following agreement carefully before installing:*

#### Software License Agreement

This Agreement made and entered into by and between you and Star Micronics Co., Ltd. (hereinafter referred to as "Star") stipulates the terms and conditions pertaining to the licensing of the software.

Please read this Software License Agreement carefully before installing or using the software and accompanying data (hereinafter referred to as "the Software"). By installing the Software, you are agreeing to be bound by this Agreement. If you do not agree to the terms of this Agreement, you are not entitled to install the Software.

[Exit](#)

[Install Now](#)

[Info & Guides](#)

[Contact Star](#)


[I Accept](#) **CLICK ACCEPT**

**star**

Always Leading - Always Innovating

3-

Welcome to the World of FuturePRNT!



Visit [www.futurePRNT.com](http://www.futurePRNT.com)

### Install Drivers & Software

*Please read the following instructions before installing:*

#### Installing Drivers and Software:

1. This auto install will automatically install Windows 2k, XP, OPOS and JavaPOS drivers as well as the SDK (software developer's kit). It will also install all futurePRNT features into your computer.

Click the "Win XP and 2k" button below to continue installation.

2. For Windows 98, Linux and Mac OS X drivers, browse this CD to find the appropriate drivers. Note: these drivers do not include the futurePRNT features at this time.

[Exit](#)

[Install Now](#)

[Info & Guides](#)

[Contact Star](#)

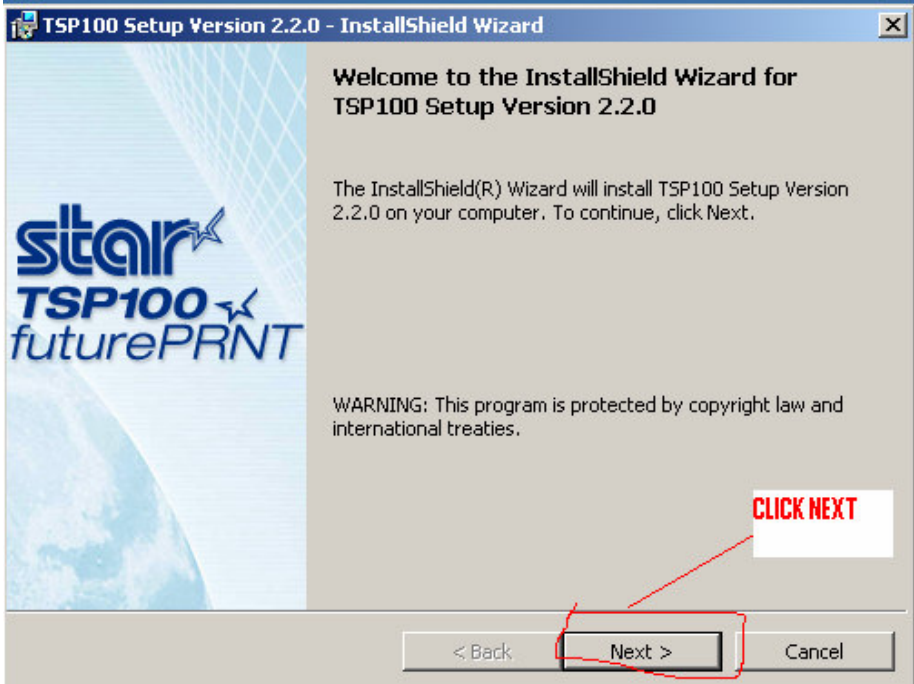
[Win XP and 2K](#) **CLICK WINXP**

[Browse CD](#)

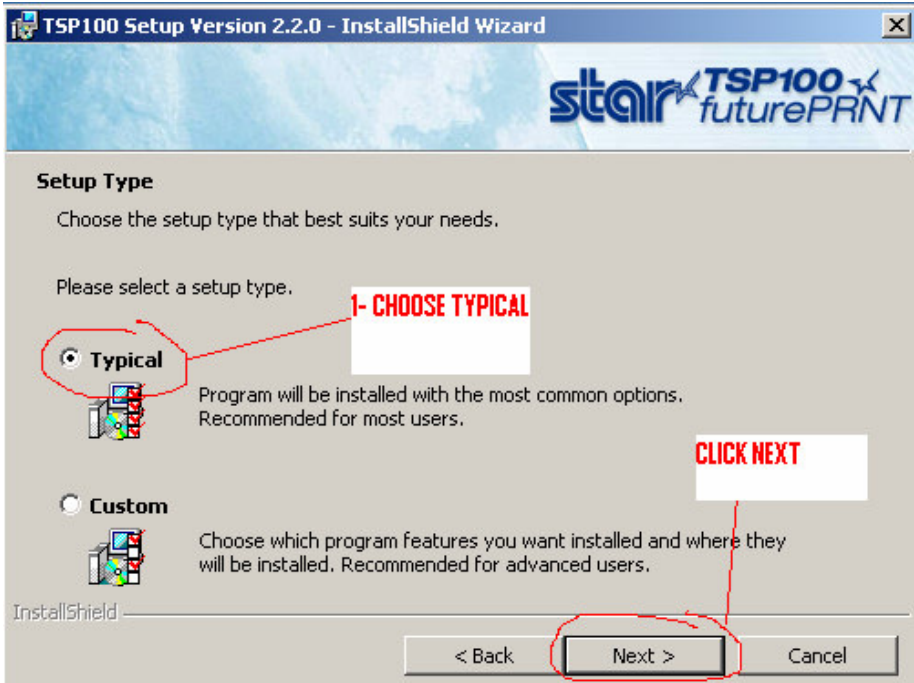
**star**

Always Leading - Always Innovating

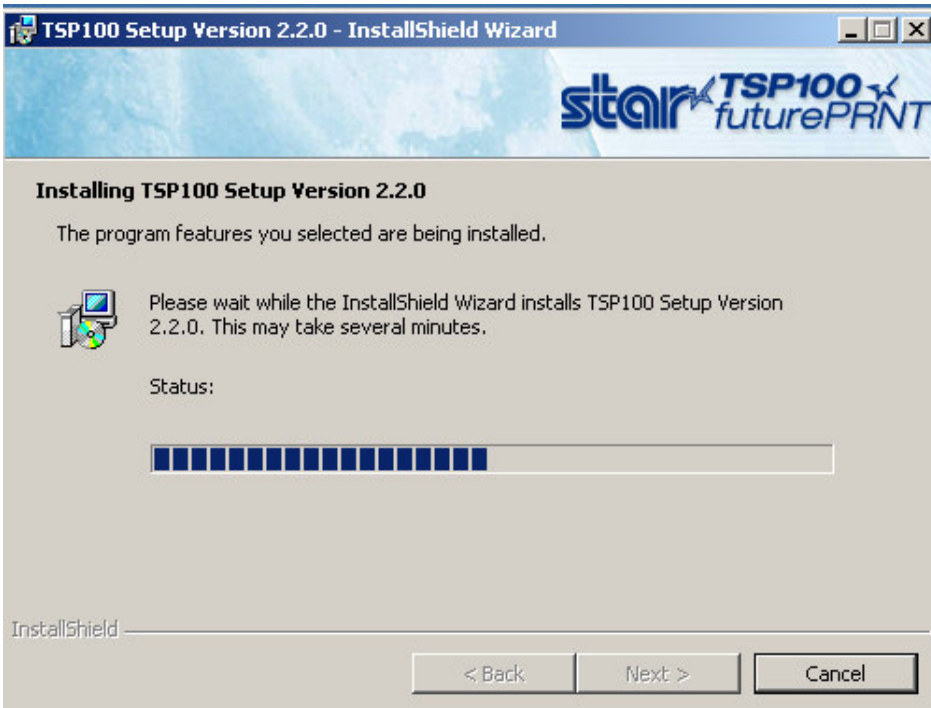
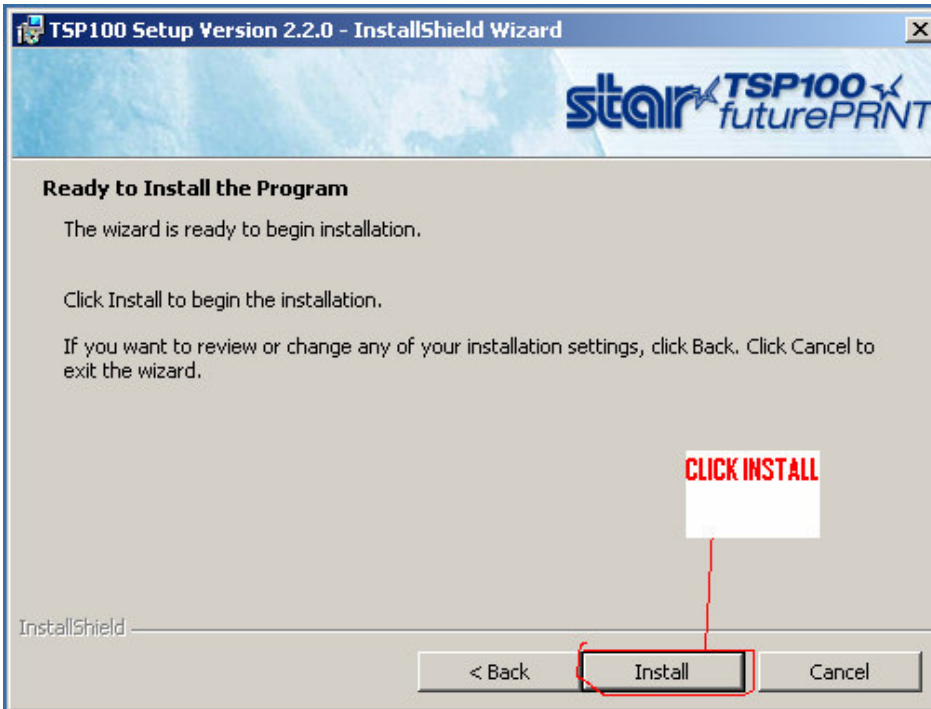
4-

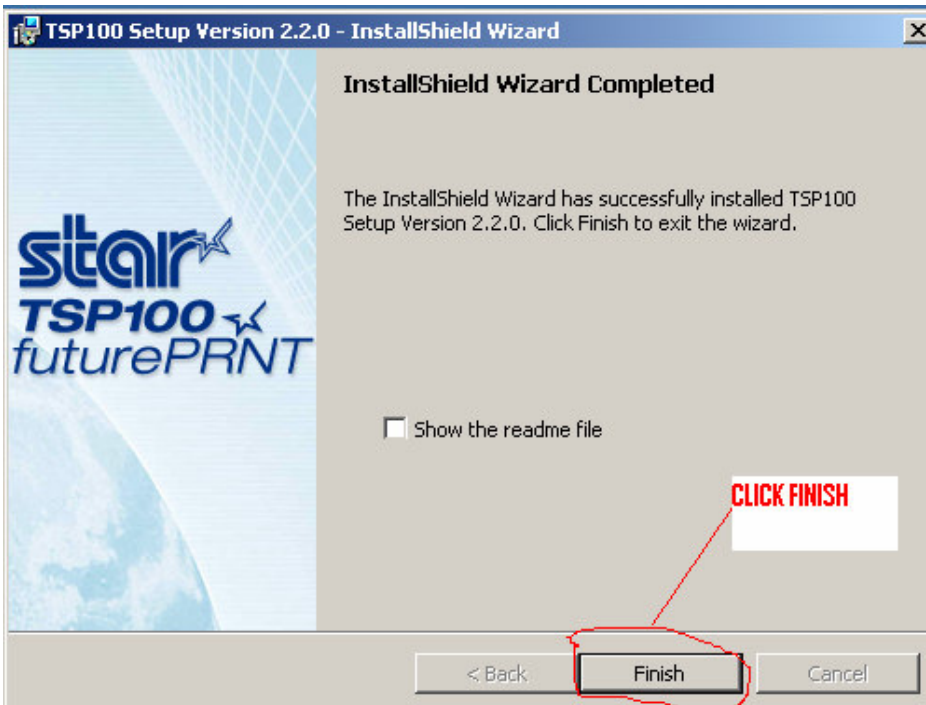


5-



6-





9-

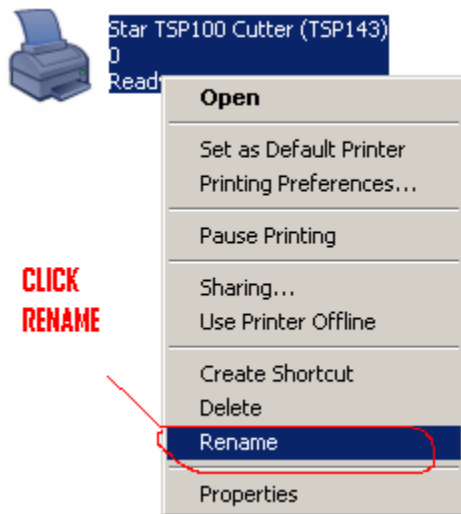
10- Connect Printer Power Cable to back of printer

11- Connect USB cable to computer USB

12- Turn On Printer

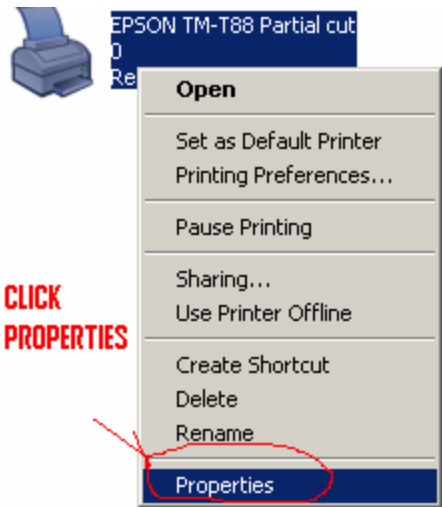
13- Go to Start Menu, Control Panel, Printer and Faxes

14- Click on the Star TSP and right click mouse

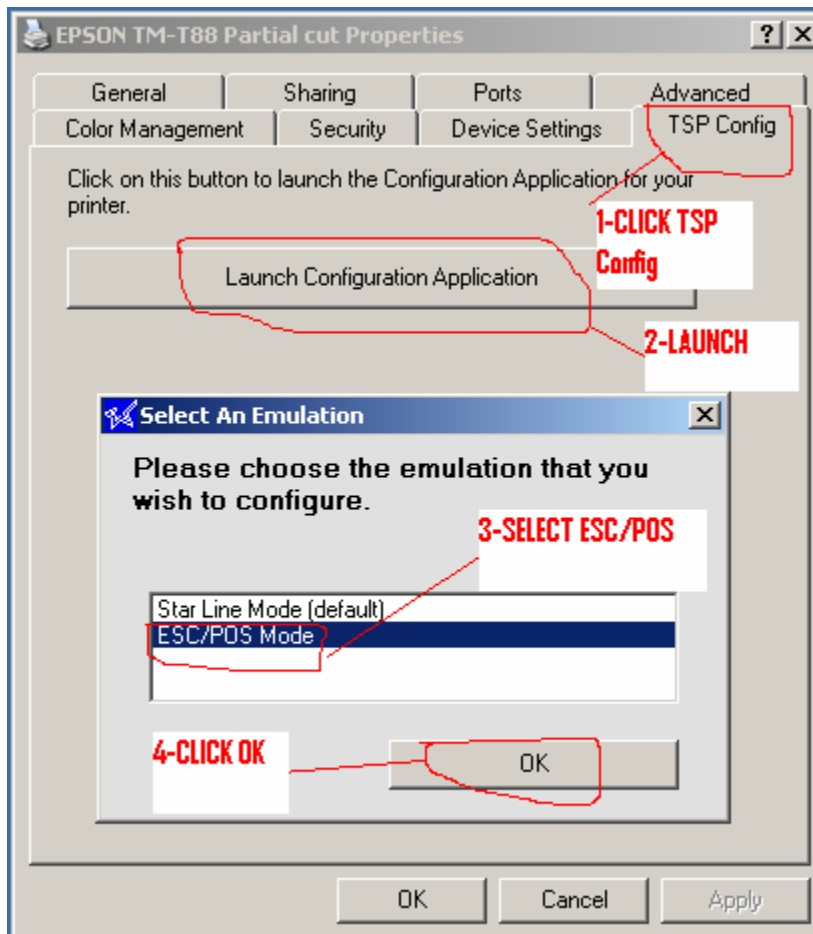


15-

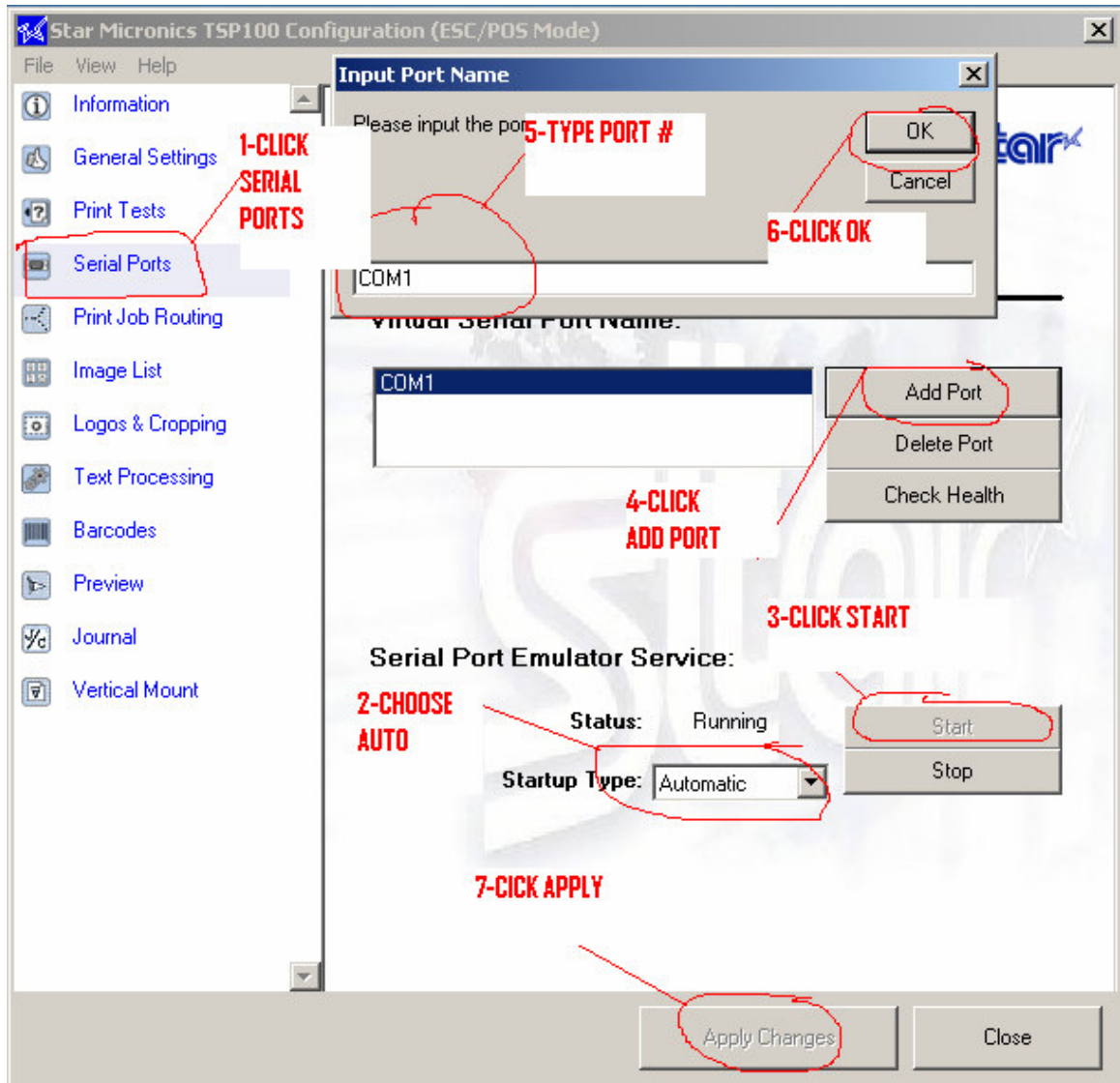
16- Type in: " EPSON TM-T88 Partial cut" (Without quotes)



17-



18-



19-

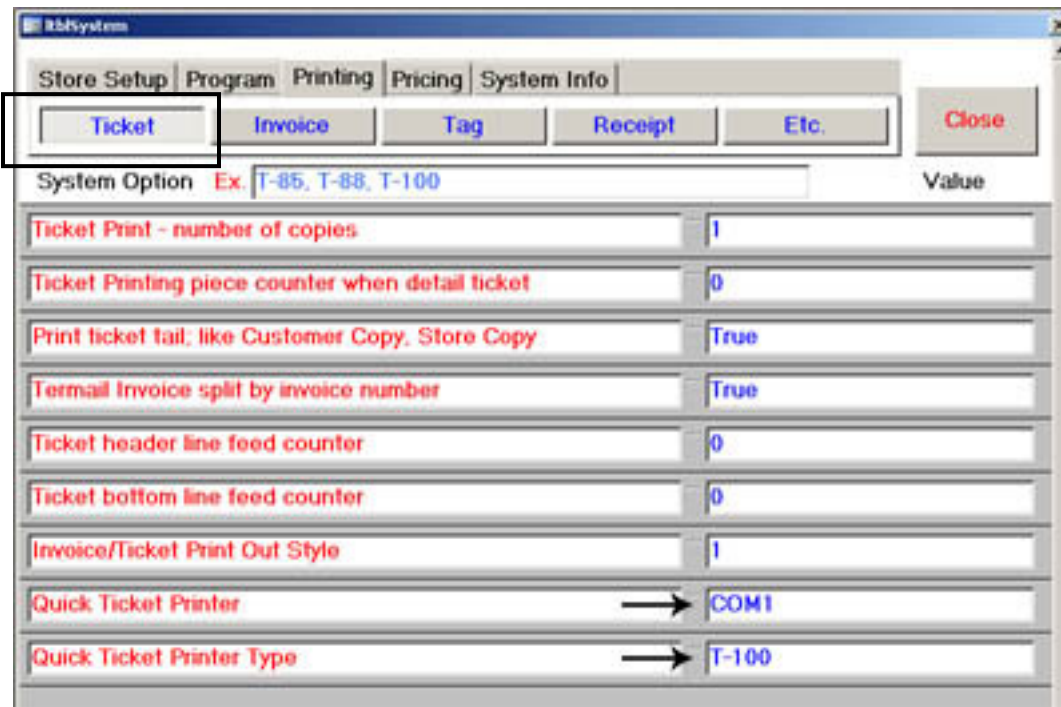
Click close and you are done configuring TSP 100 and it now print test page and printer is ready to be add to EnliteS

### 1.5 CONFIGURING TSP100 ON ENLITEXP

1. Open EnliteXP
2. Go to the MENU and click in the Manager Access Button, type the password.
3. Click in the "Option Change" button



- Go to "Printing" tab and write COM1 in Quick Ticket Printer and T-100 in Quick Ticket Printer Type



## 2. TAG PRINTERS SETUP FOR ENLITEXP

---

Two types of printers that are frequently used:

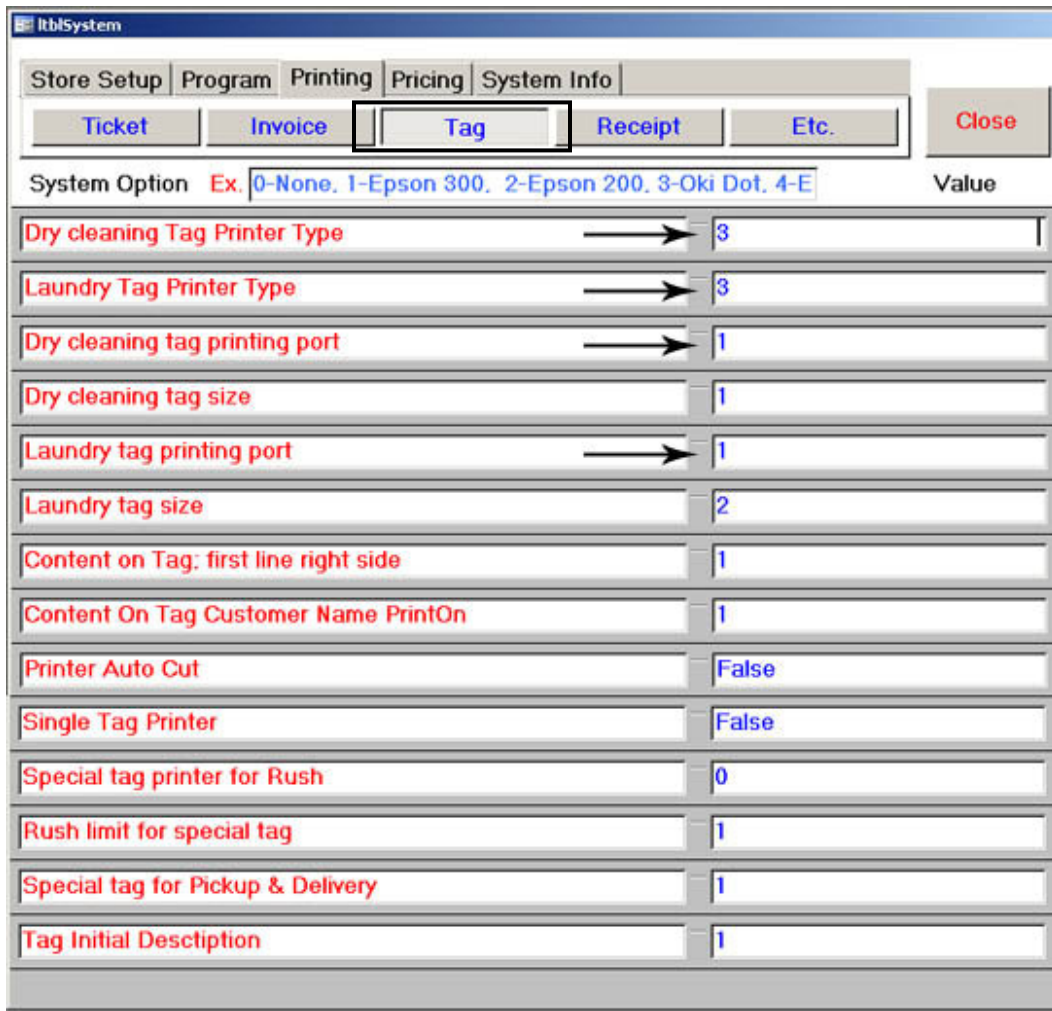
- OKI Microline 320 Turbo
- Star SP500

### 2.1 CONFIGURING OKI Microline 320 ON ENLITEXP

1. Connect the printer to the parallel port (usually LPT1), Windows detects the printer and installs it automatically.
2. Open EnliteXP
3. Go to the MENU and click in the Manager Access Button, type the password.
4. Click in the "Option Change" button



5. Go to "Printing" tab and choose Tag and write the following configuration:



## 2.2 CONFIGURING STAR SP500 ON ENLITEXP

1. Open Dip Switch cover (Found in bottom of printer)
2. Turn switch 1 and 4 to ON, and switches 2 and 3 to OFF

SW	1	2	3	4
ON	x			x
OFF		x	x	

3. Connect the printer to the parallel port (usually LPT1).

4. Open EnliteXP
5. Go to the MENU and click in the Manager Access Button, type the password.
6. Click in the "Option Change" button



7. Go to "Printing" tab and choose Tag and write the following configuration:

ItblSystem

Store Setup | Program | Printing | Pricing | System Info

Ticket | Invoice | **Tag** | Receipt | Etc. | Close

System Option Ex. 0-None, 1-Epson 300, 2-Epson 200, 3-Oki Dot, 4-E Value

Dry cleaning Tag Printer Type	5
Laundry Tag Printer Type	5
Dry cleaning tag printing port	1
Dry cleaning tag size	1
Laundry tag printing port	1
Laundry tag size	2
Content on Tag: first line right side	1
Content On Tag Customer Name PrintOn	1
Printer Auto Cut	False
Single Tag Printer	False
Special tag printer for Rush	0
Rush limit for special tag	1
Special tag for Pickup & Delivery	1
Tag Initial Description	1